



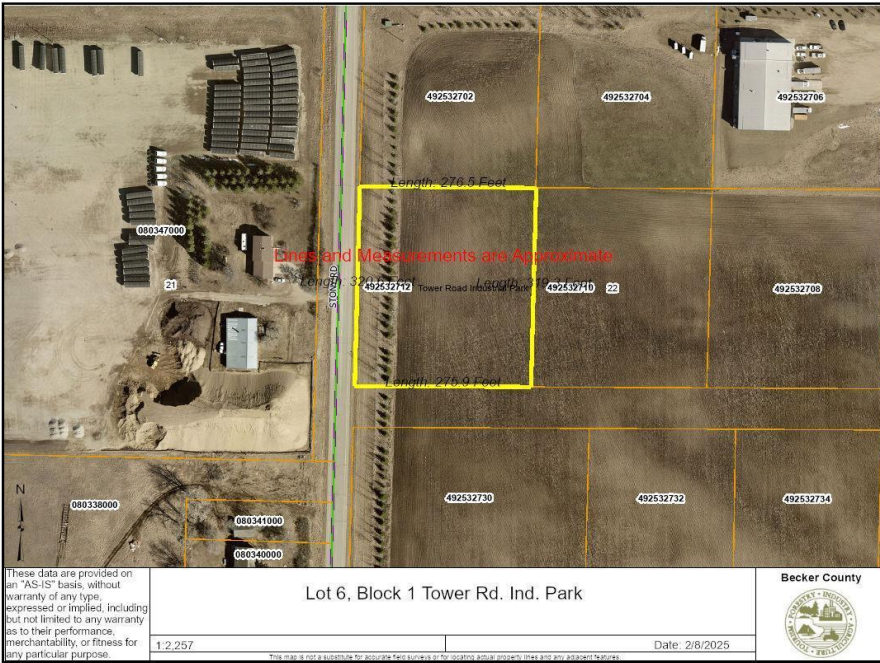
MLS 6659130 Land

\$86,785

2.01 Acres
Subdivided

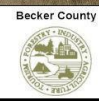
Lot 006 Stony Road
Detroit Lakes MN 56501

Status: Active



These data are provided on an "AS-IS" basis, without warranty of any type, expressed or implied, including but not limited to any warranty as to their performance, merchantability, or fitness for any particular purpose.

Lot 6, Block 1 Tower Rd. Ind. Park
1:2,257
Date: 2/8/2025



Description:

Calling all Contractors, Manufactures, Processing plants, or any other business looking to expand or grow in a industrial setting. Affordable City of Detroit Lakes Industrial lots available in the N Tower Road Industrial Park and the North Industrial Park. Lot sizes range from 2-5 acres. Tax Increment financing may be available. Call today with questions or for more information!

Additional Details:

Lot Acres 2.01
Lot Dimensions 275x320
School District 22
Taxes (unreported)
Taxes with Assessments (unreported)
Tax Year 2025

Additional Features:

Driving Directions:

From N Tower Road drive South on Stony Road to 2nd lot on the East side of the road



Listed By:
The Real Estate Company of Detroit Lakes

Affinity Real Estate Inc. participates in the Regional Multiple Listing Service of Minnesota, Inc Broker Reciprocity (sm) program, allowing us to display other broker's listings on our website. All properties are subject to prior sale, change or withdrawal.



Call Affinity Real Estate
218-237-3333
info@affinityrealestate.com



Affinity Real Estate - 600 Park Avenue South - Park Rapids MN 56470