



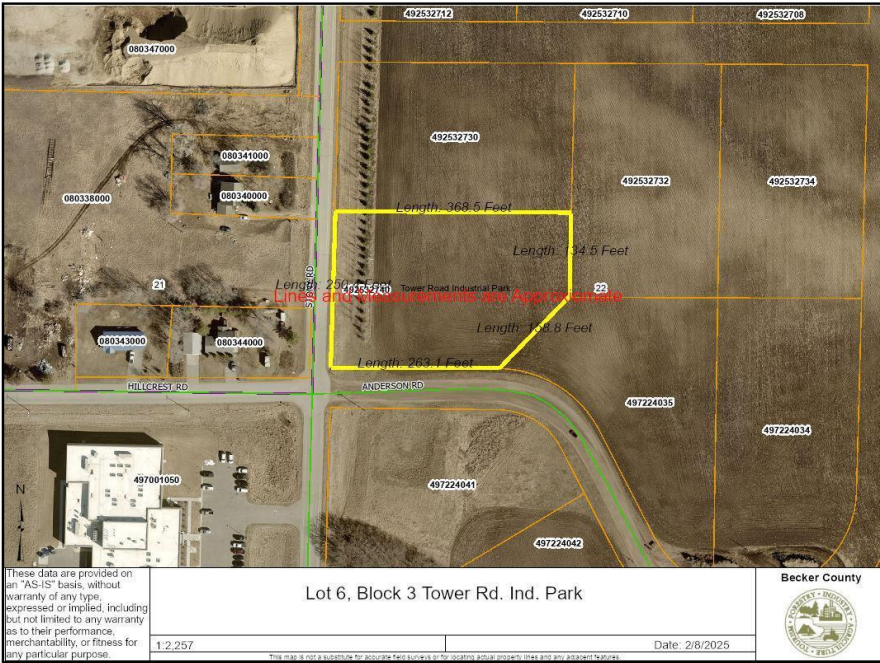
MLS 6659142 Land

**\$83,294**

1.97 Acres  
Subdivided

Lot 6 Stony Road  
Detroit Lakes MN 56501

Status: Active



These data are provided on an "AS-IS" basis, without warranty of any type, expressed or implied, including but not limited to any warranty as to their performance, merchantability, or fitness for any particular purpose.

Lot 6, Block 3 Tower Rd. Ind. Park

Becker County



1:2.257

Date: 2/8/2025

**Description:**

Calling all Contractors, Manufactures, Processing plants, or any other business looking to expand or grow in a industrial setting. Affordable City of Detroit Lakes Industrial lots available in the N Tower Road Industrial Park and the North Industrial Park. Lot sizes range from 2-5 acres. Tax Increment financing may be available. Call today with questions or for more information!

**Additional Details:**

Lot Acres	1.97
Lot Dimensions	Irregular
School District	22
Taxes	(unreported)
Taxes with Assessments	(unreported)
Tax Year	2025

**Additional Features:**

**Driving Directions:**

From N Tower Road drive south on Stony Road to The lot on the North East side of the intersection of Stony and Anderson Rd



Listed By:  
The Real Estate Company of Detroit Lakes

Affinity Real Estate Inc. participates in the Regional Multiple Listing Service of Minnesota, Inc Broker Reciprocity (sm) program, allowing us to display other broker's listings on our website. All properties are subject to prior sale, change or withdrawal.



Call Affinity Real Estate

**218-237-3333**

[info@affinityrealestate.com](mailto:info@affinityrealestate.com)



Affinity Real Estate - 600 Park Avenue South - Park Rapids MN 56470