



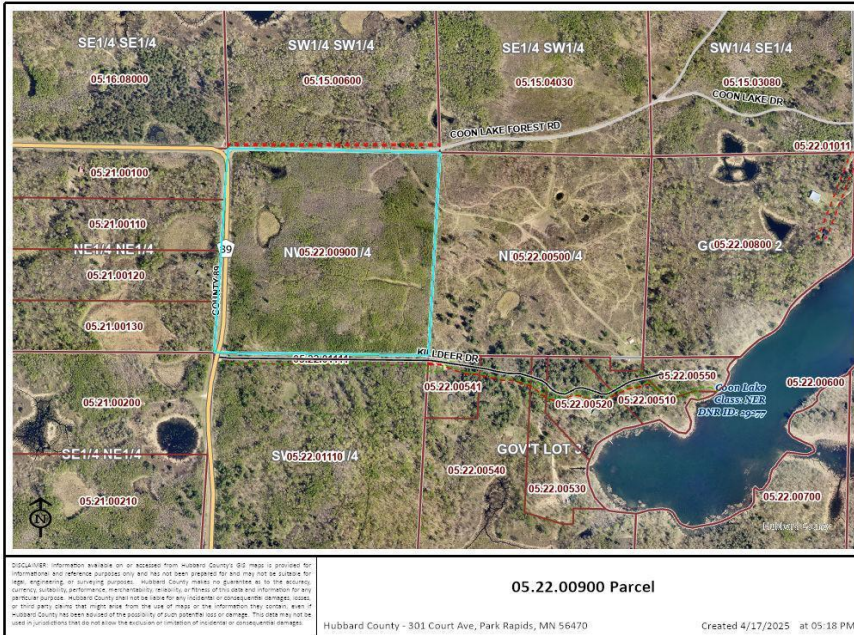
MLS 6700565 Land

**\$200,000**

39.46 Acres  
Raw Land

TBD County Rd 89  
Park Rapids MN 56470

Status: Active



#### Description:

Uncover your own private retreat with this 40-acre parcel located just north of Park Rapids. Ideal for hunters, nature enthusiasts, or anyone dreaming of a secluded home in the woods, this property offers unmatched peace and privacy. Diverse young forest that was logged 12 years ago. Many four wheeler trails and hunting sites with shooting lanes. With power already available at the road, you're one step closer to bringing your vision to life. Don't miss this rare chance to own a versatile property perfect for hunting, recreation, or building your dream escape.

#### Additional Details:

Lot Acres	39.46
Lot Dimensions	1304x1313x1295x1328
School District	309
Taxes	\$396
Taxes with Assessments	\$396
Tax Year	2024

#### Additional Features:

#### Driving Directions:

From Park Rapids, North on Hwy 71 for 15 miles to East on County Rd 89 for 2 miles. After County 89 turns a sharp right, Property is on the left (east). Sign on property.



Listed By:  
Keller Williams Realty Professionals

Affinity Real Estate Inc. participates in the Regional Multiple Listing Service of Minnesota, Inc Broker Reciprocity (sm) program, allowing us to display other broker's listings on our website. All properties are subject to prior sale, change or withdrawal.



Call Affinity Real Estate  
**218-237-3333**  
[info@affinityrealestate.com](mailto:info@affinityrealestate.com)



Affinity Real Estate - 600 Park Avenue South - Park Rapids MN 56470