



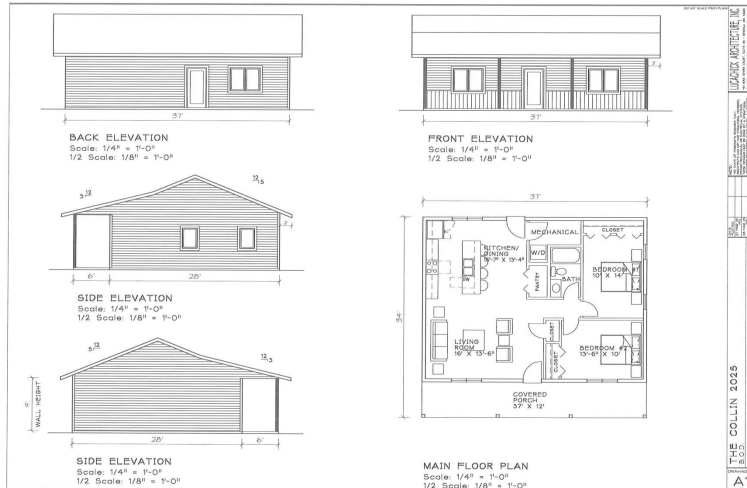
MLS 6707661 Residential

\$219,900

1,036 sq ft
2 bedrooms
1 baths

TBD Little Norway Avenue
Bemidji MN 56601

Status: Pending



Description:

Experience luxury single-level living in this stunning new home designed for modern comfort. Featuring 2 spacious bedrooms and a beautifully appointed bathroom, this residence includes in-floor heating, solid core doors, and energy-efficient Marvin Windows, all under sleek LP SmartSide siding.

The open-concept living area seamlessly connects to the kitchen, complete with a large island for up to four guests. Ample closet space ensures stylish storage throughout.

Located in a peaceful development just minutes from Bemidji, this home offers a serene retreat with easy access to amenities. Customize your space with various options for cabinets, paint, flooring, doors, and siding.

Attached and detached garage packages are available upon request. Contact us today to explore Down Payment Assistance options and make this home yours!

Additional Details:

Year Built	2025
Lot Acres	1.08
Lot Dimensions	320x145
School District	31
Taxes	\$144
Taxes with Assessments	\$144
Tax Year	2025

Additional Features:

Fuel: Propane **Heat:** Boiler, Heat Pump, Radiant Floor

Driving Directions:

From Bemidji, south on Paul Bunyan Drive to Carr Lake Rd SE, turn Left (East) to Little Norway Ave SE. Take first right onto Maplewood Dr. Lot is on the corner of Maplewood and Edgewood.



Listed By:
Lake-N-Woods Realty

Affinity Real Estate Inc. participates in the Regional Multiple Listing Service of Minnesota, Inc Broker Reciprocity (sm) program, allowing us to display other broker's listings on our website. All properties are subject to prior sale, change or withdrawal.



Call Affinity Real Estate

218-237-3333

info@affinityrealestate.com



Affinity Real Estate - 600 Park Avenue South - Park Rapids MN 56470