



MLS 6732064 Land

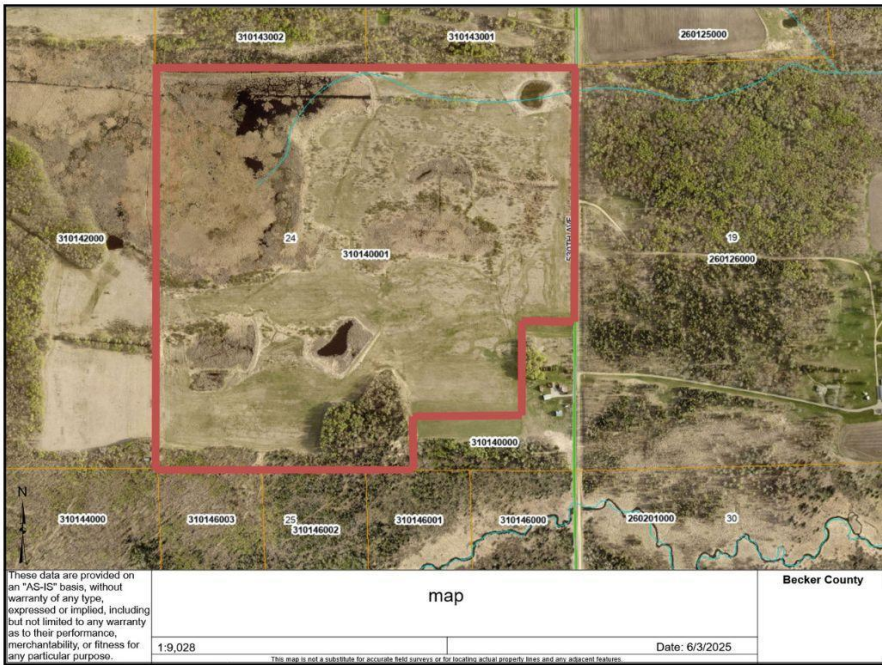
\$250,000

134.31 Acres

Raw Land

xxxxx 530th Avenue
Menahga MN 56464

Status: Active



Description:

134 acres of hunting ground in a prime whitetail location! Experience the beauty of central Minnesota in its native state. Expansive grasses, small ponds, and wooded areas offer wildlife a welcome home throughout this parcel. Property is in a perpetual easement with the USDA - restrictive covenants apply. The entire parcel is subject to the easement and will not be suitable for building. Deer stands are excluded from sale.

Additional Details:

| | |
|------------------------|--------------|
| Lot Acres | 134.31 |
| Lot Dimensions | 134.31 acres |
| School District | 821 |
| Taxes | \$746 |
| Taxes with Assessments | \$746 |
| Tax Year | 2024 |

Additional Features:

Driving Directions:

From Frazee - Head E on Hwy 87, turn right onto 530th Ave. Parcel on the W side of the road.



Listed By:
Weichert, Realtors - Paulson Land Co

Affinity Real Estate Inc. participates in the Regional Multiple Listing Service of Minnesota, Inc Broker Reciprocity (sm) program, allowing us to display other broker's listings on our website. All properties are subject to prior sale, change or withdrawal.



Call Affinity Real Estate

218-237-3333

info@affinityrealestate.com



Affinity Real Estate - 600 Park Avenue South - Park Rapids MN 56470