



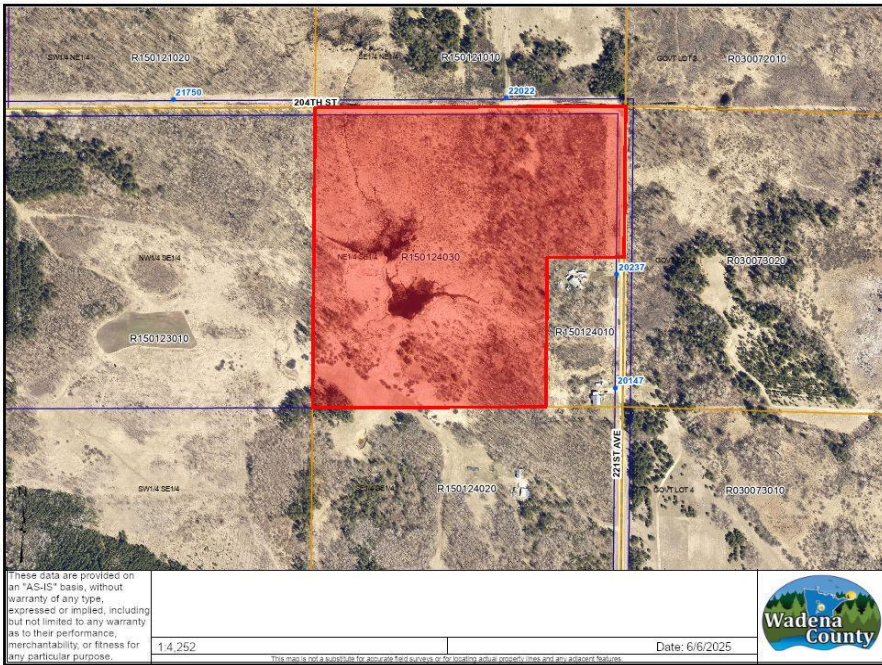
MLS 6734619 Land

\$89,000

35 Acres
Other

xxxx 221st Avenue
Verndale MN 56481

Status: Pending



Description:

35 acres of hunting land. Across the road is state hunting land.

Additional Details:

Lot Acres	35
Lot Dimensions	668 x 330 x 659 x 1000 x 1327 x 1619
School District	818
Taxes	\$494
Taxes with Assessments	\$494
Tax Year	2025

Additional Features:

Driving Directions:

Starting at Wadena 71 N toward Ash Ave NW then to 4 Sunnybrook Rd NE then to Co Rd 23 turn left. Go about 4 miles, turn on Co Rd 7, go about 4 miles to 221st Ave, you will see the sign all the way down.



Listed By:
Coldwell Banker Crown Realtors

Affinity Real Estate Inc. participates in the Regional Multiple Listing Service of Minnesota, Inc Broker Reciprocity (sm) program, allowing us to display other broker's listings on our website. All properties are subject to prior sale, change or withdrawal.



Call Affinity Real Estate

218-237-3333

info@affinityrealestate.com

MLS



Affinity Real Estate - 600 Park Avenue South - Park Rapids MN 56470