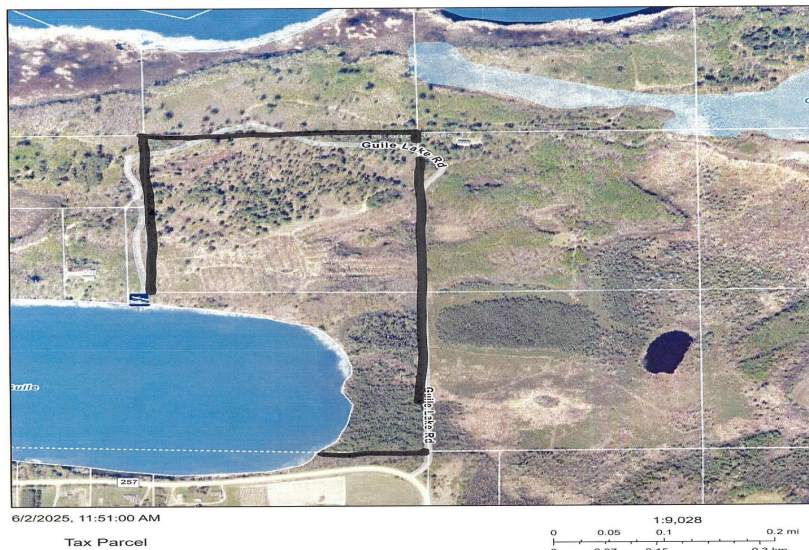


# Itasca County GIS Web Map



This information is a compilation of data from different sources with varying degrees of accuracy and requires a qualified field survey to verify.



MLS 6741248 Lake Land

**\$350,000**

38.91 Acres  
Raw Land

TBD Guile Lake Road  
Cohasset MN 55721

Waterfront: Guile

Status: Active

## Description:

55+ acres and 1450+ straight line frontage on Guile Lake, 10 minutes to Grand Rapids. Known for it's panfish and pike, Guile is located close to The Mississippi River as well as Jay Gould access. Max depth of about 60 feet, undeveloped shoreline with many potential building sites. Rolling acreage with mix of cedar on South end and many adult pine in the upper 40. Great opportunities here.

## Additional Details:

Lot Acres	38.91
Lot Dimensions	Irregular
School District	318
Taxes	\$2,364
Taxes with Assessments	\$2,364
Tax Year	2024

## Additional Features:

## Driving Directions:

CR 67 South to right on CR 257 to Guile Lake



Listed By:  
MN DIRECT PROPERTIES

Affinity Real Estate Inc. participates in the Regional Multiple Listing Service of Minnesota, Inc Broker Reciprocity (sm) program, allowing us to display other broker's listings on our website. All properties are subject to prior sale, change or withdrawal.



Call Affinity Real Estate

**218-237-3333**

[info@affinityrealestate.com](mailto:info@affinityrealestate.com)



Affinity Real Estate - 600 Park Avenue South - Park Rapids MN 56470