



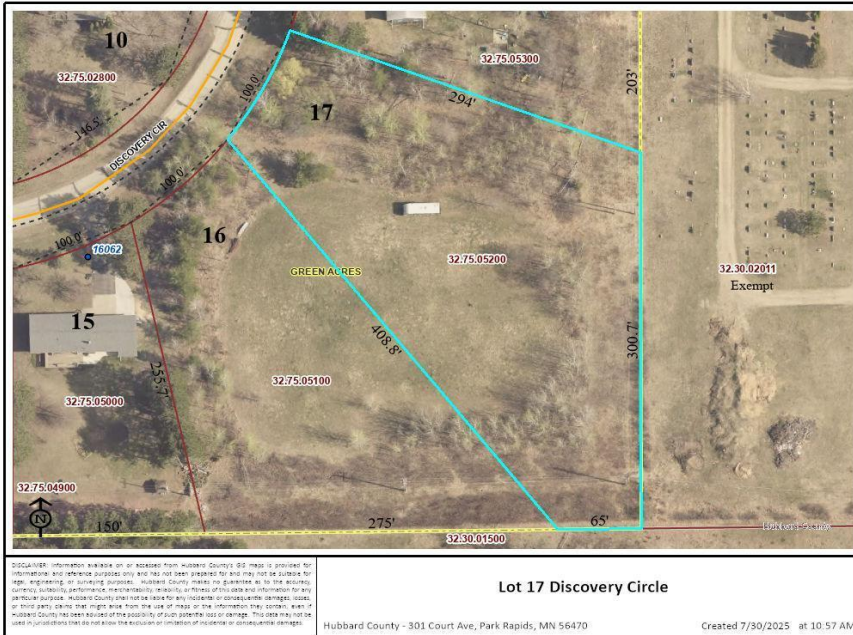
MLS 6763996 Land

\$34,900

1.78 Acres
Plat Designed

Lot 17 Discovery Circle
Park Rapids MN 56470

Status: Active



Description:

Lot 17 (1.78 Acres) in Discovery Circle! ~ large lot in city limits. Great location at the end of the circle. See Lot 16 also for sale.

Additional Details:

Lot Acres	1.78
Lot Dimensions	100x294x300x65x408
School District	309
Taxes	\$330
Taxes with Assessments	\$330
Tax Year	2025

Additional Features:

Driving Directions:

From Hwys. 71/34 in Park Rapids. East on Hwy 34 to a right on Cty Rd 6. Take a left on Discovery Circle. The lot is in the far right corner of the circle.



Listed By:
Wolff & Simon Real Estate

Affinity Real Estate Inc. participates in the Regional Multiple Listing Service of Minnesota, Inc Broker Reciprocity (sm) program, allowing us to display other broker's listings on our website. All properties are subject to prior sale, change or withdrawal.



Call Affinity Real Estate
218-237-3333
info@affinityrealestate.com



Affinity Real Estate - 600 Park Avenue South - Park Rapids MN 56470