



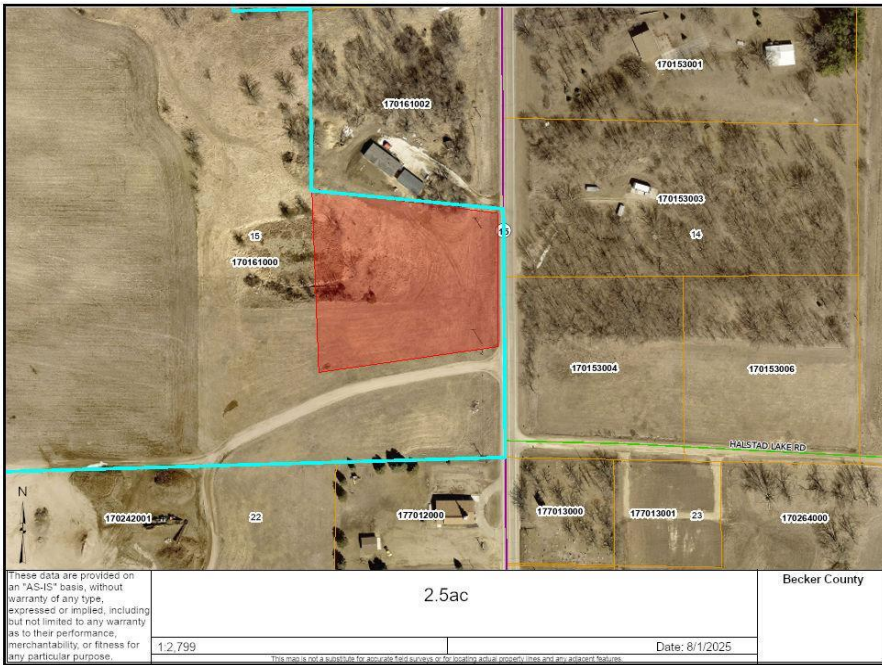
MLS 6765666 Land

**\$65,000**

2.5 Acres  
Raw Land

TBD County Highway 15  
Detroit Lakes MN 56501

Status: Active



#### Description:

Residential Land! 2.5 acres! Located just North of Lake Eunice on County Road 15. Close to Lake Maud and Lake Melissa. A nice location to build in the heart of lakes country. Situated between Cormorant Village & Shoreham as well as Detroit Lakes. This is a split from parcel 170161000. No commercial! Covenants apply!

#### Additional Details:

Lot Acres	2.5
Lot Dimensions	2.5 ac
School District	2889
Taxes	\$458
Taxes with Assessments	\$458
Tax Year	2025

#### Additional Features:

#### Driving Directions:

From Highway 10 take County Rd 15 South



Listed By:  
Counselor Realty Detroit Lakes

Affinity Real Estate Inc. participates in the Regional Multiple Listing Service of Minnesota, Inc Broker Reciprocity (sm) program, allowing us to display other broker's listings on our website. All properties are subject to prior sale, change or withdrawal.



Call Affinity Real Estate

**218-237-3333**

[info@affinityrealestate.com](mailto:info@affinityrealestate.com)



Affinity Real Estate - 600 Park Avenue South - Park Rapids MN 56470