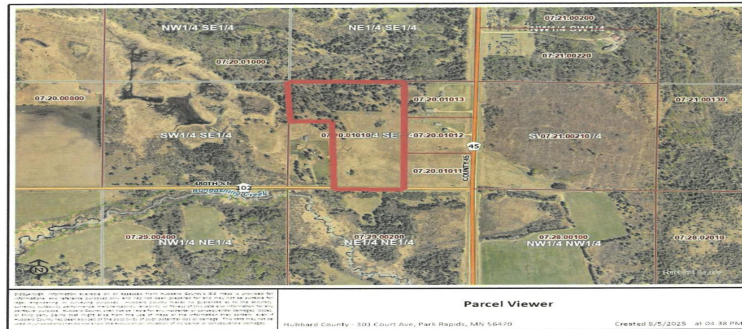




MLS 6767578 Land

\$88,00018 Acres
Raw LandTBD 480th Street
Laporte MN 56461

Status: Active


https://gis.co.hubbard.mn.us/arcgis/rest/directories/arcgisjobs/link_print_gpserver/f5ff7ef9bc49417aac477681d1f5c98/scratch/74001e8c-7244-11f0-... 1/1
Description:

Are you looking for approximately 18 acres to build your dream home, this is the property for you! There is approximately 4 acres of pasture and 14 acres of mature trees

Additional Details:

Lot Acres	18
Lot Dimensions	TBD
School District	31
Taxes	(unreported)
Taxes with Assessments	(unreported)
Tax Year	2024

Additional Features:**Driving Directions:**

Hwy 2 east to county 45 south take right go to 480th st turn right land on right at sign



Listed By:
Grimes Realty

Affinity Real Estate Inc. participates in the Regional Multiple Listing Service of Minnesota, Inc Broker Reciprocity (sm) program, allowing us to display other broker's listings on our website. All properties are subject to prior sale, change or withdrawal.



Call Affinity Real Estate

218-237-3333**info@affinityrealestate.com**

Affinity Real Estate - 600 Park Avenue South - Park Rapids MN 56470