



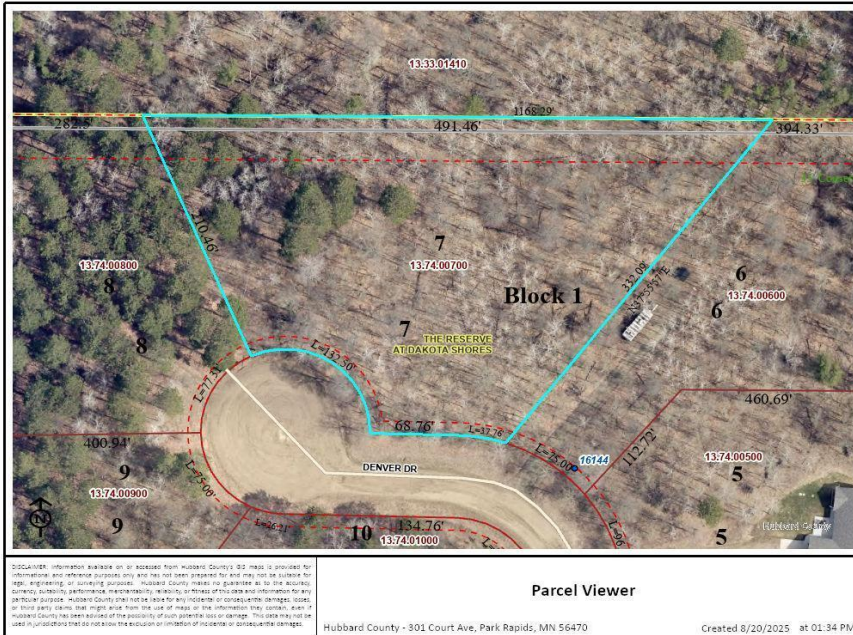
MLS 6775817 Land

\$40,000

1.85 Acres
Subdivided

TBD Denver Drive
Park Rapids MN 56470

Status: Pending



Description:

Nicely wooded lot near Long Lake with rolling terrain and within walking distance to public access located on southwestern edge of the development. Featuring underground utilities, phone, cable and high speed internet and approaches with culverts.

Additional Details:

| | |
|------------------------|-----------------|
| Lot Acres | 1.85 |
| Lot Dimensions | 277x210x491x332 |
| School District | 309 |
| Taxes | \$200 |
| Taxes with Assessments | \$200 |
| Tax Year | 2025 |

Additional Features:

Driving Directions:

From Hwy 34/71: Go E on 34 to CR 20. Right on 20 to 160th St to Denver Dr. Right on Denver Dr.



Listed By:
Affinity Real Estate Inc.

Affinity Real Estate Inc. participates in the Regional Multiple Listing Service of Minnesota, Inc Broker Reciprocity (sm) program, allowing us to display other broker's listings on our website. All properties are subject to prior sale, change or withdrawal.



Call Affinity Real Estate

218-237-3333

info@affinityrealestate.com



Affinity Real Estate - 600 Park Avenue South - Park Rapids MN 56470