



MLS 6783406 Lake Land

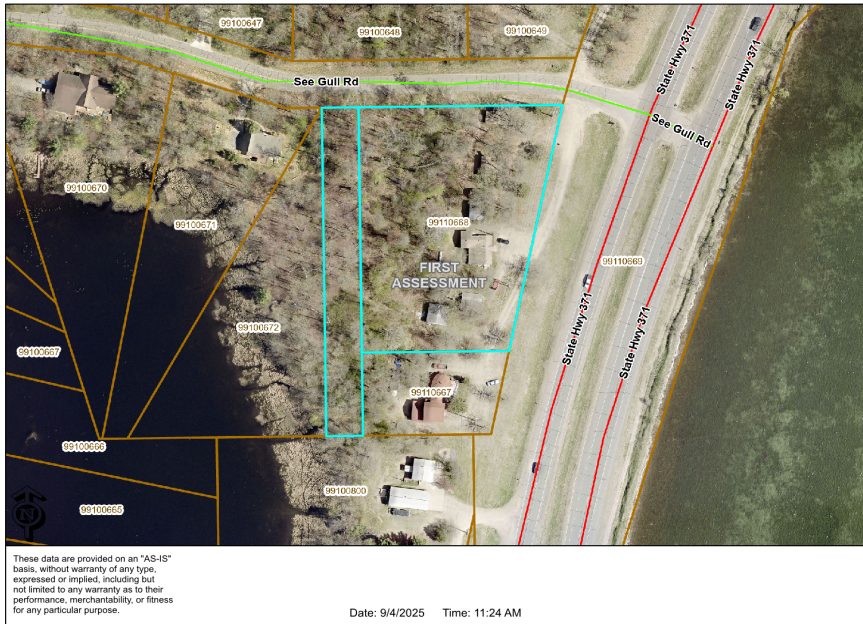
\$599,900

2.43 Acres
Raw Land

19745 See Gull Road
Brainerd MN 56401

Waterfront: Love

Status: Active



Description:

Commercial and residentially zoned 2.4 acre property. Property has great Highway 371 visibility with easy North and South Highway access. Association access to the Gull Lake chain with docking opportunity on Love Lake! Property is subdividable with multiple option for use! The High traffic counts make for a great business location and the convenient location is perfect for personal storage or Barn dominium!

Additional Details:

| | |
|------------------------|-----------------|
| Lot Acres | 2.43 |
| Lot Dimensions | 354x328x463x250 |
| School District | 181 |
| Taxes | \$1,496 |
| Taxes with Assessments | \$1,496 |
| Tax Year | 2024 |

Additional Features:

Driving Directions:

North of Brainerd/Baxter. Between Nisswa and Baxter on west side of highway across from North Long lake.



Listed By:
RE/MAX Results - Nisswa

Affinity Real Estate Inc. participates in the Regional Multiple Listing Service of Minnesota, Inc Broker Reciprocity (sm) program, allowing us to display other broker's listings on our website. All properties are subject to prior sale, change or withdrawal.



Call Affinity Real Estate

218-237-3333

info@affinityrealestate.com



Affinity Real Estate - 600 Park Avenue South - Park Rapids MN 56470