



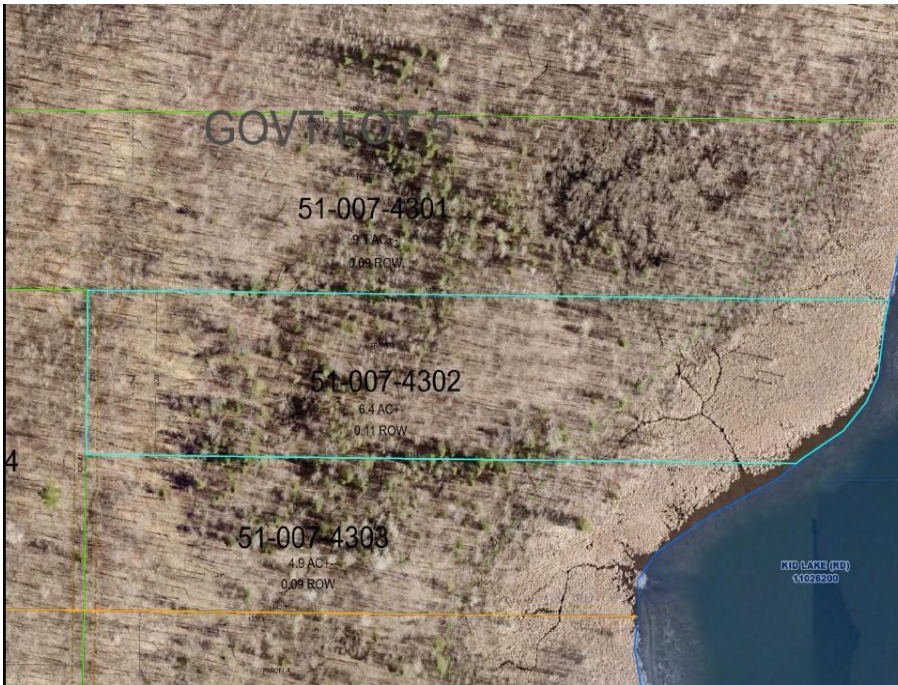
MLS 7017398 Land

\$185,000

6.4 Acres
Raw Land

TBD - Tract 2 Ticonderoga Trail
Hackensack MN 56425

Status: Active



Description:

Escape to the Northwoods with this beautiful 6.4-acre lakeside lot on Kid Lake near Hackensack. Tucked among towering trees, this property offers peace, privacy, and space you've been dreaming of for a cabin retreat, year-round home, or a place to park your RV. A new private road installed last year provides convenient access while preserving the natural, up-north setting. Recently surveyed and ready for your Plans, this is your chance to build exactly what you want. Enjoy easy access to the charm of Longville and Hackensack, known for great dining, shopping, endless lake recreation, fishing, hunting, ATV/snowmobiling, and many other outdoor activities. Whether it's quiet mornings on the water, evenings by the fire, or weekends exploring the lakes area, this property delivers the true Minnesota lake lifestyle.

Additional Details:

Lot Acres	6.4
Lot Dimensions	258.9 x 1184 x 220 x 1280
School District	693
Taxes	(unreported)
Taxes with Assessments	(unreported)
Tax Year	2025

Additional Features:

Driving Directions:

From Hackensack East on County Rd 5 NW/Woman Lake Rd, turn left onto 23rd Ave NW, right on new road for 0.5, miles on the right.



Listed By:
Bill Hansen Realty/Longville

Affinity Real Estate Inc. participates in the Regional Multiple Listing Service of Minnesota, Inc Broker Reciprocity (sm) program, allowing us to display other broker's listings on our website. All properties are subject to prior sale, change or withdrawal.



Call Affinity Real Estate

218-237-3333

info@affinityrealestate.com



Affinity Real Estate - 600 Park Avenue South - Park Rapids MN 56470