



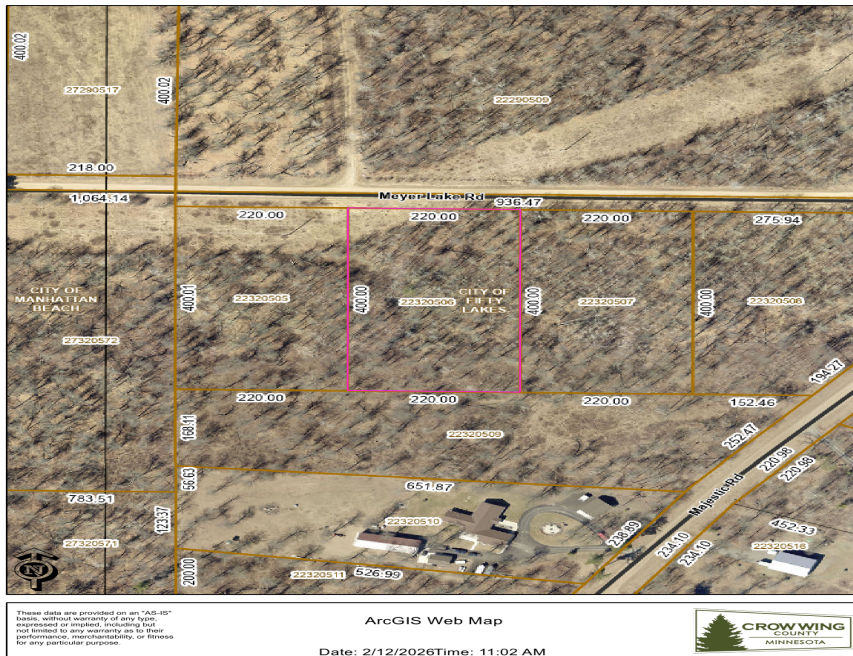
MLS 7020476 Land

\$29,900

2.04 Acres
Finished Lot(s)

Lot 7 Meyer Lake Road
Fifty Lakes MN 56448

Status: Coming Soon



Description:

Nice level 2 acre lot close to all the area fun. Public access to the Whitefish Chain is just a mile away. Restaurants, golf, many lakes, atv and snowmobile trails, hunting, scenic bicycle routes, shopping, churches, parks, and medical services minutes from your door. Extra lot available, see MLS #7020473

Additional Details:

Lot Acres	2.04
Lot Dimensions	220x400x220x400
School District	1065
Taxes	\$174
Taxes with Assessments	\$174
Tax Year	2025

Additional Features:

Driving Directions:

From Crosslake, North on Cty Rd 66 to right on Meyer Lake Road to sign on right. Meyer Lake Road is 1/2 mile south of County Road 1 and about 3/4 mile north of Trout Lake public access.



Listed By:
RE/MAX Results - Crosslake

Affinity Real Estate Inc. participates in the Regional Multiple Listing Service of Minnesota, Inc Broker Reciprocity (sm) program, allowing us to display other broker's listings on our website. All properties are subject to prior sale, change or withdrawal.



Call Affinity Real Estate

218-237-3333

info@affinityrealestate.com



Affinity Real Estate - 600 Park Avenue South - Park Rapids MN 56470