



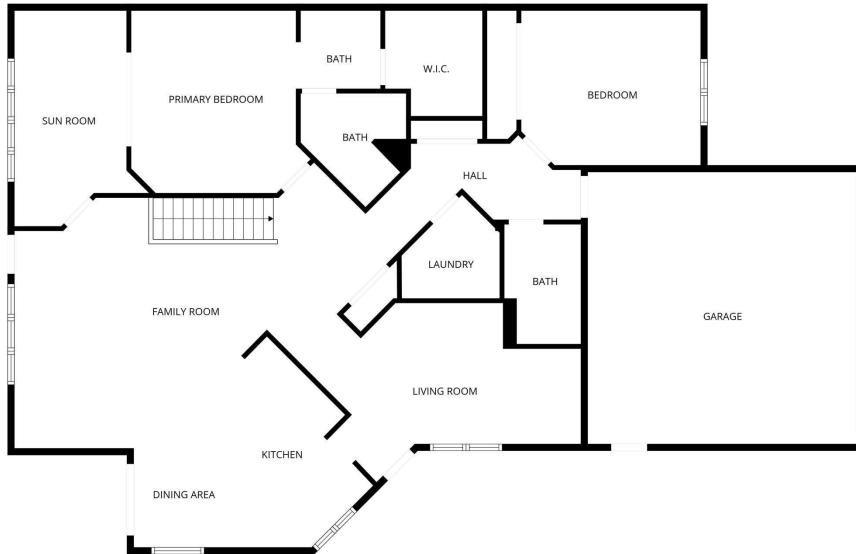
MLS 7024255 Residential

\$500,000

3,384 sq ft
3 bedrooms
3 baths

507 Waterfront Way
Bemidji MN 56601

Status: Pending



FLOOR PLAN CREATED BY CUBICASA APP. MEASUREMENTS DEEMED HIGHLY RELIABLE BUT NOT GUARANTEED.

Description:

Pending before print. Entered for statistical purposes.

Additional Details:

| | |
|------------------------|---------|
| Year Built | 2000 |
| Lot Acres | 0.05 |
| Lot Dimensions | 34x52 |
| Garage Stalls | 2 |
| School District | 1386 |
| Taxes | \$4,812 |
| Taxes with Assessments | \$4,812 |
| Tax Year | 2025 |

Additional Features:

Basement: Finished **Fuel:** Array **Garage:** 2 **Heat:** Forced Air, Fireplace(s) **Sewer:** City Sewer/Connected **Water:** City Water/Connected **Air Conditioning:** Central Air

Driving Directions:

South on Washington Ave, right on Roosevelt Rd, right on Waterfront Way.



Listed By:
Century 21 Dickinson

Affinity Real Estate Inc. participates in the Regional Multiple Listing Service of Minnesota, Inc Broker Reciprocity (sm) program, allowing us to display other broker's listings on our website. All properties are subject to prior sale, change or withdrawal.



Call Affinity Real Estate

218-237-3333

info@affinityrealestate.com



Affinity Real Estate - 600 Park Avenue South - Park Rapids MN 56470