



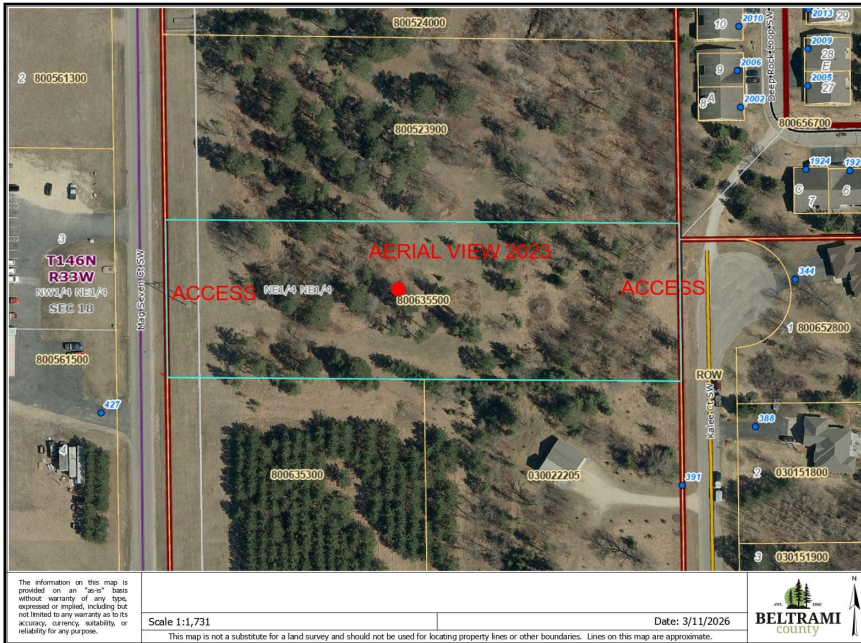
MLS 7035973 Land

**\$210,000**

2.7 Acres  
Raw Land

TBD Mag Seven Court  
Bemidji MN 56601

Status: Active



**Description:**

This expansive 2.67-acre parcel offers exceptional flexibility for either commercial development or residential use. Located within the City of Bemidji, the property features a generous, paved streets, room for building, parking, outdoor space, or future expansion. Two accesses available, on to the West side of the lot and the other on the East. Its size and shape make it well-suited for a wide range of possibilities—from a custom home to a business site, storage facility, or mixed-use concept.

The lot's position within an established community provides convenient access to local amenities, services, and transportation routes, supporting both livability and business visibility. With level terrain and no existing structures, the property is ready for your vision, whether you're planning, an investment build, a private residence or a commercial venture.

City water and sewer available, along with natural gas, power and internet.

This rare dual-potential parcel offers the freedom to create what best fits your goals today while leaving room for future opportunities.

**Additional Details:**

Lot Acres	2.7
Lot Dimensions	191x610
School District	1386
Taxes	\$614
Taxes with Assessments	\$614
Tax Year	2025

**Additional Features:**

**Driving Directions:**

West on Division St, left on Mag Seven Ct SW. Lot on the left.



Listed By:  
Century 21 Dickinson

Affinity Real Estate Inc. participates in the Regional Multiple Listing Service of Minnesota, Inc Broker Reciprocity (sm) program, allowing us to display other broker's listings on our website. All properties are subject to prior sale, change or withdrawal.



Call Affinity Real Estate

**218-237-3333**

[info@affinityrealestate.com](mailto:info@affinityrealestate.com)



Affinity Real Estate - 600 Park Avenue South - Park Rapids MN 56470