



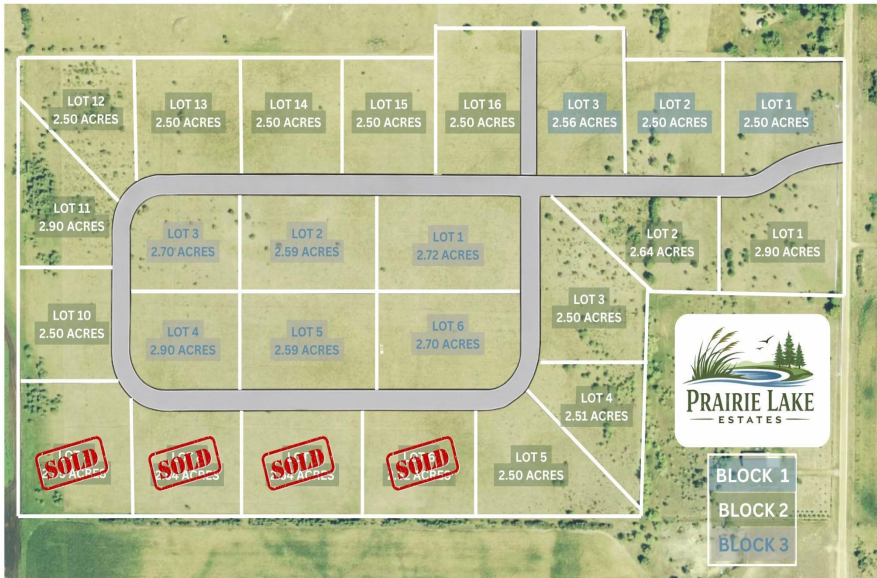
MLS 7048131 Land

**\$89,900**

2.5 Acres  
Site Plan Filed

Blk 2 Lot 11 Prairie Lake Estates  
Audubon MN 56511

Status: Active



**Description:**

Discover the perfect place to build at Prairie Lake Estates! This beautiful 2.50± acre lot offers the ideal balance of space, privacy, and convenience.

Located just one mile north of Pelican Lake, you'll enjoy easy access to recreation while still having plenty of room to spread out. Whether you're planning a storage building, shop, or your dream home, this property gives you the flexibility to bring your vision to life.

Don't miss your chance to secure this prime lot in Prairie Lake Estates.

**NO SPECIALS!!!**

**Additional Details:**

Lot Acres	2.5
Lot Dimensions	2.50 Acres
School District	1299
Taxes	(unreported)
Taxes with Assessments	(unreported)
Tax Year	2026

**Additional Features:**

**Driving Directions:**

Co Hwy 6 to Viking Trail to Co Rd 138; Continue to Heimark Ave; Development will be on right



Listed By:  
HomeSmart Adventure Realty

Affinity Real Estate Inc. participates in the Regional Multiple Listing Service of Minnesota, Inc Broker Reciprocity (sm) program, allowing us to display other broker's listings on our website. All properties are subject to prior sale, change or withdrawal.



Call Affinity Real Estate

**218-237-3333**

[info@affinityrealestate.com](mailto:info@affinityrealestate.com)



Affinity Real Estate - 600 Park Avenue South - Park Rapids MN 56470