



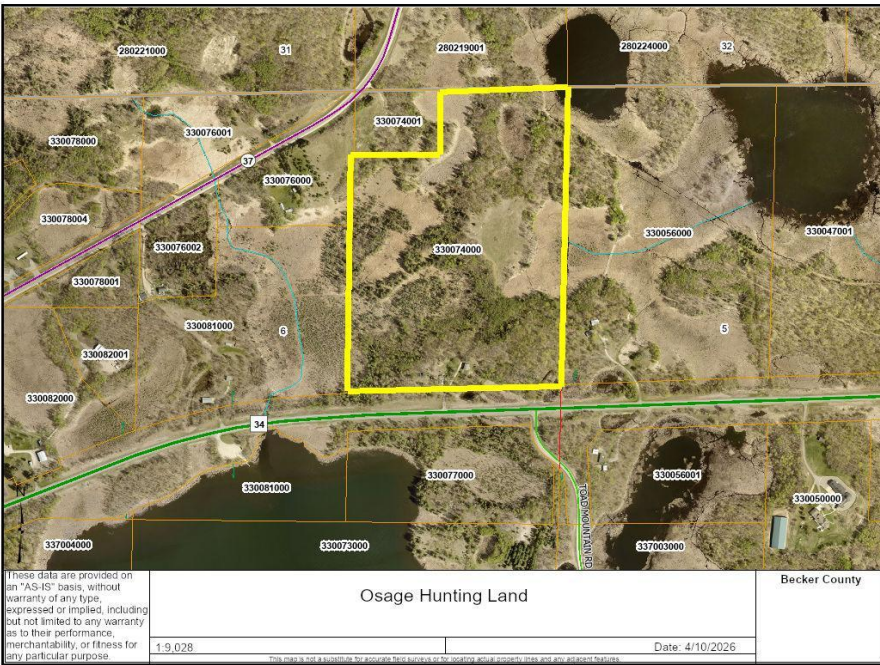
MLS 7053142 Residential

\$349,000

1,560 sq ft
2 bedrooms
2 baths

41858 State Highway 34
Osage MN 56570

Status: Active



Description:

Escape to the outdoors with this exceptional 52.8-acre property located just 20 miles from Detroit Lakes. This versatile property offers the perfect blend of hunting land, recreational space, and comfortable living. The property features a single-family home with 1,560 square feet of living space, including 2 bedrooms and 2 bathrooms—ideal for a year-round residence, hunting lodge, or weekend retreat. Equipped with well and septic (including drainfield), the home provides the essential infrastructure for comfortable rural living.

With over 50 acres to explore, this property offers outstanding opportunities for hunting, trail riding, and enjoying the natural surroundings. Whether you're seeking a private getaway, a basecamp for outdoor adventures, or a long-term investment, this property delivers space, privacy, and potential.

Enjoy the peace of the countryside while still being within a short drive of lakes, dining, shopping, and amenities in Detroit Lakes.

Additional Details:

Year Built	1976
Lot Acres	52.84
Lot Dimensions	1326' x 1877'
Garage Stalls	1
School District	1106
Taxes	\$1,488
Taxes with Assessments	\$1,488
Tax Year	2026

Additional Features:

Basement: Finished **Fuel:** Array **Garage:** 1 **Heat:** Forced Air **Sewer:** Tank with Drainage Field **Water:** Well **Air Conditioning:** Central Air

Driving Directions:

From Detroit Lakes, head east on state highway 34 approximately 21 miles to 41858 state highway 34. Property is on the north side of the highway.



Listed By:
HomeSmart Adventure Realty

Affinity Real Estate Inc. participates in the Regional Multiple Listing Service of Minnesota, Inc Broker Reciprocity (sm) program, allowing us to display other broker's listings on our website. All properties are subject to prior sale, change or withdrawal.



Call Affinity Real Estate

218-237-3333

info@affinityrealestate.com



Affinity Real Estate - 600 Park Avenue South - Park Rapids MN 56470