



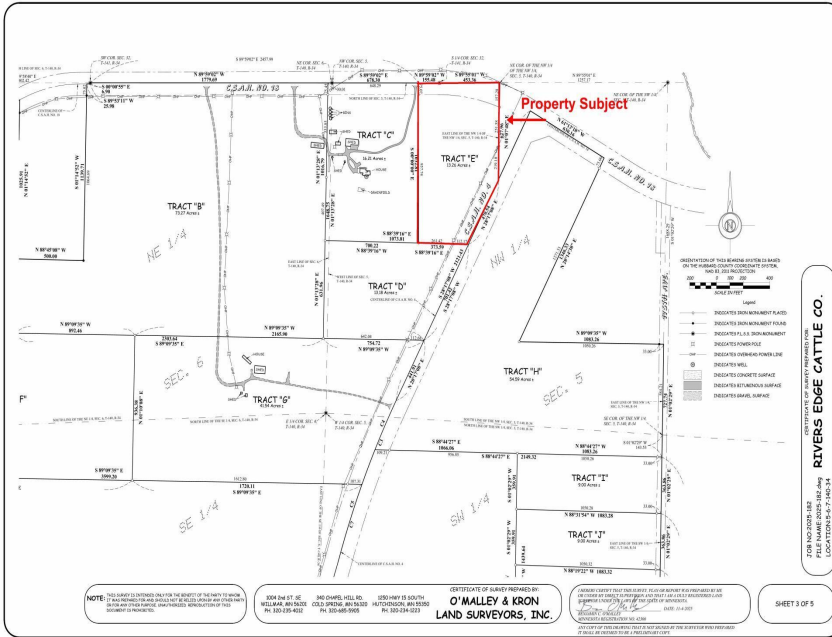
MLS 7056412 Land

\$109,900

13.26 Acres
Raw Land

Tract E County 18
Park Rapids MN 56470

Status: Active



Description:

Looking for the perfect spot to build? Check out this newly split parcel in a convenient location! Enjoy the freedom of bare land with easy access to everything you need. Bring your plans and start turning your vision into reality.

Additional Details:

Lot Acres	13.26
Lot Dimensions	608x1097x373x957
School District	1384
Taxes	(unreported)
Taxes with Assessments	(unreported)
Tax Year	2026

Additional Features:

Driving Directions:

From 34/71 in Park Rapids, East on 34 to a left on County 4 to a left on County 18 to property on corner.



Listed By:
Wolff & Simon Real Estate

Affinity Real Estate Inc. participates in the Regional Multiple Listing Service of Minnesota, Inc Broker Reciprocity (sm) program, allowing us to display other broker's listings on our website. All properties are subject to prior sale, change or withdrawal.



Call Affinity Real Estate
218-237-3333
info@affinityrealestate.com



Affinity Real Estate - 600 Park Avenue South - Park Rapids MN 56470