



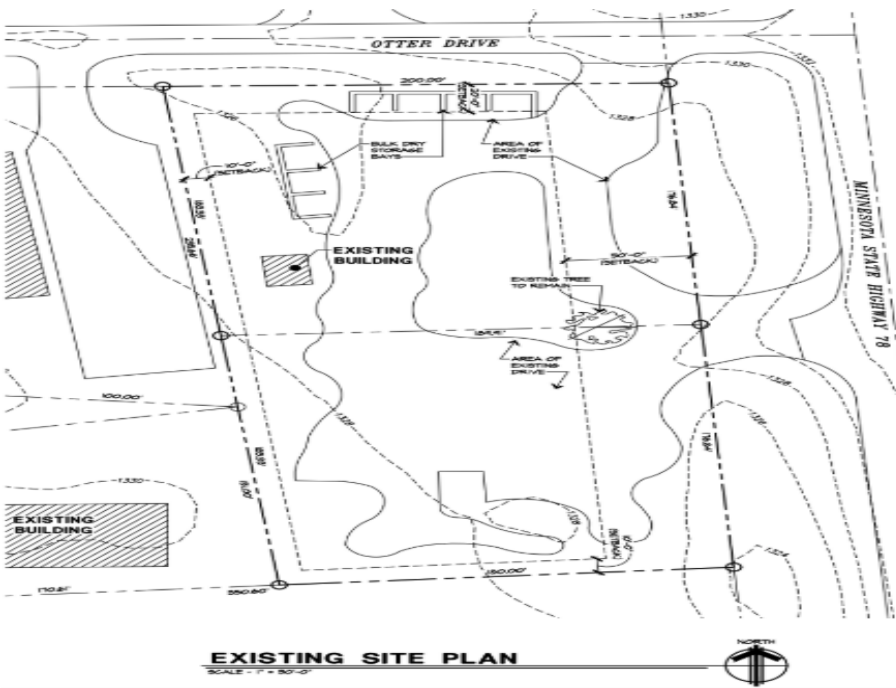
MLS 7074292 Land

\$345,000

1.56 Acres
Rough Grade

101 Otter Drive
Ottertail MN 56571

Status: Active



Description:

Prime commercial lot positioned in the heart of lakes country at 101 Otter Drive. Located near Otter Tail Lake, Thumper Pond Golf Course, residential neighborhoods, and area businesses, the property offers strong potential for a variety of commercial uses, including office, retail, or specialty commercial development. This highly visible site offers convenient access along MN Hwy 78, a north-south corridor serving approximately 4,600 vehicles per day through the Ottertail area. (Source: MnDOT Hwy 78 Corridor Study.)

Additional Details:

Year Built	1958
Lot Acres	1.56
Lot Dimensions	Lot A 177 x 189 x 183 x 199; Lot B 177 x 179 x 183 x 189
School District	549
Taxes	\$2,433
Taxes with Assessments	\$2,433
Tax Year	2026

Additional Features:

Driving Directions:

Located on the corner of Otter Drive and MN Hwy 78 in Ottertail, MN



Listed By:
eXp Realty

Affinity Real Estate Inc. participates in the Regional Multiple Listing Service of Minnesota, Inc Broker Reciprocity (sm) program, allowing us to display other broker's listings on our website. All properties are subject to prior sale, change or withdrawal.



Call Affinity Real Estate

218-237-3333

info@affinityrealestate.com



Affinity Real Estate - 600 Park Avenue South - Park Rapids MN 56470