



MLS 7103787 Lake Land

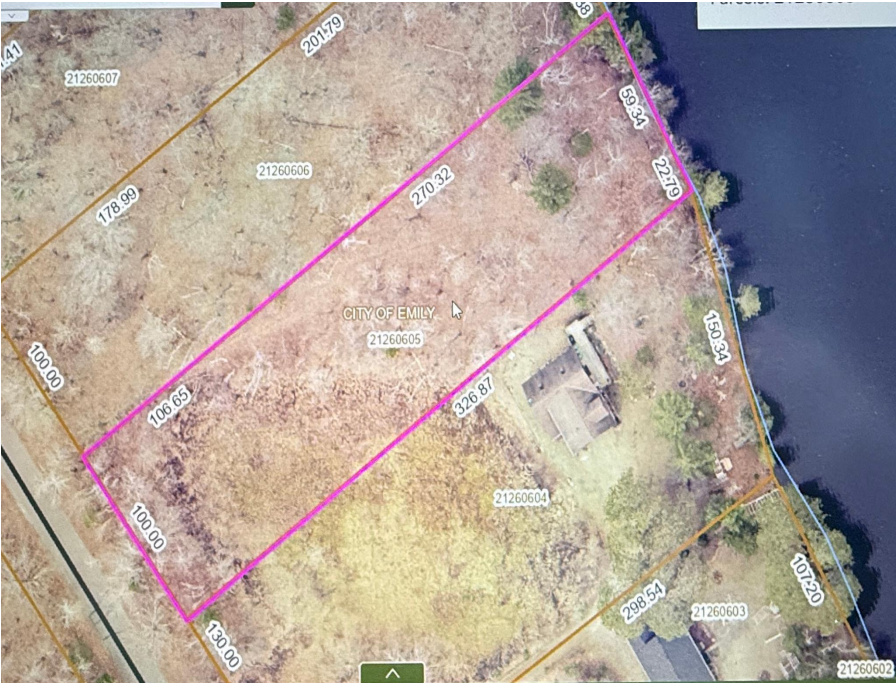
\$329,900

0.85 Acres
Raw Land

TBD South Shore Drive
Emily MN 56447

Waterfront: Mary

Status: Active



Description:

(description unavailable)

Additional Details:

Lot Acres	0.85
Lot Dimensions	100x326x100x376
School District	182
Taxes	\$1,418
Taxes with Assessments	\$1,418
Tax Year	2026

Additional Features:

Driving Directions:

From Emily



Listed By:
eXp Realty

Affinity Real Estate Inc. participates in the Regional Multiple Listing Service of Minnesota, Inc Broker Reciprocity (sm) program, allowing us to display other broker's listings on our website. All properties are subject to prior sale, change or withdrawal.



Call Affinity Real Estate

218-237-3333

info@affinityrealestate.com



Affinity Real Estate - 600 Park Avenue South - Park Rapids MN 56470