



MLS 6533313 Land

\$55,000

3.53 Acres
Raw Land

xxxx9 441st
Perham MN 56573

Status: Active

Description:

Great location to town and lakes. Ottertail County bike trail runs by the property. This lot can work as a place for your residential storage shed you have dreamed of and/or the Home/Shouse you have always wanted to build. Tar township road access to be completed by Developer at no extra cost.

Additional Details:

Lot Acres	3.53
Lot Dimensions	3.53 Acres
School District	549
Taxes	\$104
Taxes with Assessments	\$104
Tax Year	2024

Additional Features:

Driving Directions:

West of Perham on 34 to 400th north to first right 441 st follow to end of culdesac property take left to end of north culdesac.



Listed By:
New Horizons Realty of Perham

Affinity Real Estate Inc. participates in the Regional Multiple Listing Service of Minnesota, Inc Broker Reciprocity (sm) program, allowing us to display other broker's listings on our website. All properties are subject to prior sale, change or withdrawal.



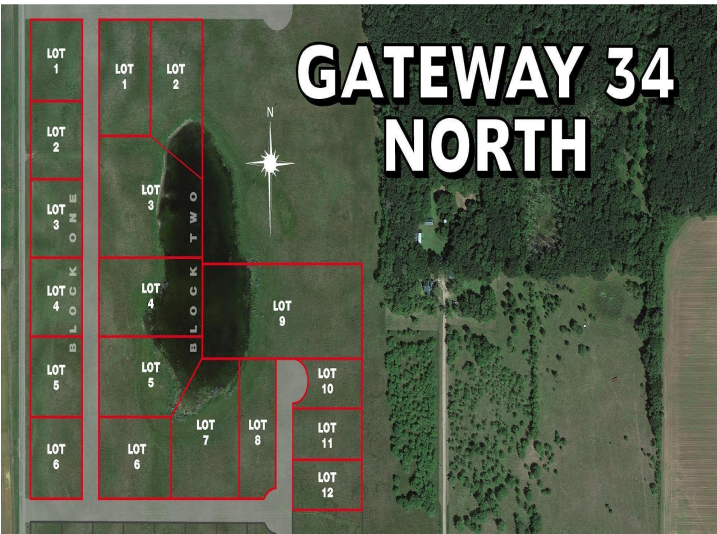
Call Affinity Real Estate

218-237-3333

info@affinityrealestate.com



Affinity Real Estate - 600 Park Avenue South - Park Rapids MN 56470



website: www.AffinityRealEstate.com | email: info@affinityrealestate.com | office: 218-237-3333 | fax:218-237-3377



\$55,000
MLS 6533313 Land
xxxx9 441st
Perham MN 56573