



MLS 6599622 Residential

\$429,000

635 sq ft
1 bedrooms
0 baths

16051 Crown Point Road
Nevis MN 56467

Status: Active

Description:

Stunning hobby farm/hunting acreage just south of Nevis. A rare chance to own a large parcel in this area. This property has approximately 82 acres of rolling fields, woods and wetland, a nature lovers paradise. A custom hunting cabin built with wood milled on site from the property. Real northwoods character and year-round recreational use with the cabin. The property also includes several outdoor farm buildings and a well. The possibilities here are endless, come and see what your dream might be.

Additional Details:

Year Built	2005
Lot Acres	82.36
Lot Dimensions	Irregular
School District	308
Taxes	\$1,576
Taxes with Assessments	\$1,786
Tax Year	2024

Additional Features:

Basement: Posts **Fuel:** Wood **Heat:** Wood Stove **Sewer:** None **Water:** Submersible - 4 Inch **Air Conditioning:** None

Driving Directions:

From Nevis go South on Cty 13, turn right/north on Crown Point Road, property is immediately on the left/west.



Listed By:
Affinity Real Estate Inc.

Affinity Real Estate Inc. participates in the Regional Multiple Listing Service of Minnesota, Inc Broker Reciprocity (sm) program, allowing us to display other broker's listings on our website. All properties are subject to prior sale, change or withdrawal.



Call Affinity Real Estate

218-237-3333

info@affinityrealestate.com



Affinity Real Estate - 600 Park Avenue South - Park Rapids MN 56470



website: www.AffinityRealEstate.com | email: info@affinityrealestate.com | office: 218-237-3333 | fax:218-237-3377

Affinity
REAL ESTATE INC

\$429,000
MLS 6599622 Residential
16051 Crown Point Road
Nevis MN 56467



website: www.AffinityRealEstate.com | email: info@affinityrealestate.com | office: 218-237-3333 | fax:218-237-3377

Affinity
REAL ESTATE INC

\$429,000
MLS 6599622 Residential
16051 Crown Point Road
Nevis MN 56467



website: www.AffinityRealEstate.com | email: info@affinityrealestate.com | office: 218-237-3333 | fax:218-237-3377



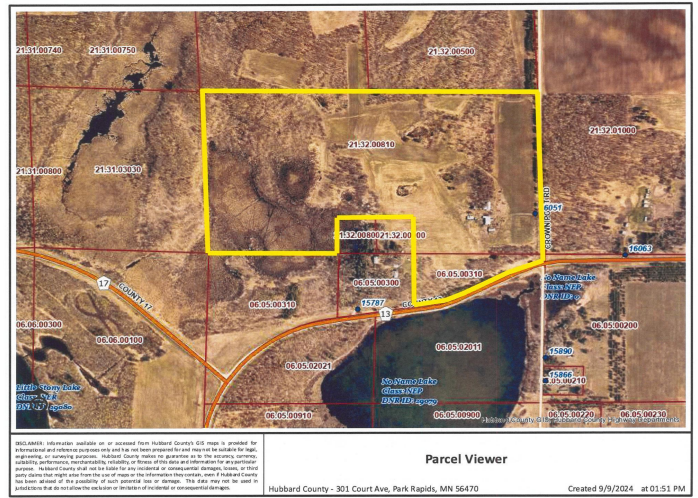
\$429,000
MLS 6599622 Residential
16051 Crown Point Road
Nevis MN 56467



website: www.AffinityRealEstate.com | email: info@affinityrealestate.com | office: 218-237-3333 | fax:218-237-3377



\$429,000
MLS 6599622 Residential
16051 Crown Point Road
Nevis MN 56467



website: www.AffinityRealEstate.com | email: info@affinityrealestate.com | office: 218-237-3333 | fax:218-237-3377



\$429,000
 MLS 6599622 Residential
 16051 Crown Point Road
 Nevis MN 56467