



MLS 6639948 Residential

**\$189,900**

1,920 sq ft  
4 bedrooms  
3 baths

1023 Minnesota Avenue  
Bemidji MN 56601

Status: Active

**Description:**

This updated 2-story home with 4 bedrooms and 3 bathrooms is situated on a corner lot in the heart of Bemidji. Featuring 9' ceilings, elegant french doors, refinished hardwood floors, and a new tile shower on the main floor, the home also boasts a convenient main floor laundry and bedroom. Upstairs, you will find a spacious common room, 3 additional bedrooms, and a full bath. The basement houses the utilities and an unfinished full bath, offering potential for additional living space. Conveniently located within walking/biking distance of Bemidji's vibrant downtown lakefront and the college, this property also holds a current city rental license. Best of all, this home is move-in ready and awaits its new owners!

**Additional Details:**

Year Built	1910
Lot Acres	0.16
Lot Dimensions	50x140
School District	31
Taxes	\$2,416
Taxes with Assessments	\$2,594
Tax Year	2024

**Additional Features:**

**Basement:** Full, Partially Finished **Fuel:** Natural Gas **Heat:** Forced Air **Sewer:** City Sewer/Connected **Water:** City Water/Connected **Air Conditioning:** None

**Driving Directions:**

From downtown Bemidji: North on Minnesota Ave NW to property on the left.



Listed By:  
Lake-N-Woods Realty

Affinity Real Estate Inc. participates in the Regional Multiple Listing Service of Minnesota, Inc Broker Reciprocity (sm) program, allowing us to display other broker's listings on our website. All properties are subject to prior sale, change or withdrawal.



**Call Affinity Real Estate**

**218-237-3333**

**info@affinityrealestate.com**



**Affinity Real Estate - 600 Park Avenue South - Park Rapids MN 56470**





website: [www.AffinityRealEstate.com](http://www.AffinityRealEstate.com) | email: [info@affinityrealestate.com](mailto:info@affinityrealestate.com) | office: 218-237-3333 | fax:218-237-3377



**\$189,900**  
MLS 6639948 Residential  
1023 Minnesota Avenue  
Bemidji MN 56601



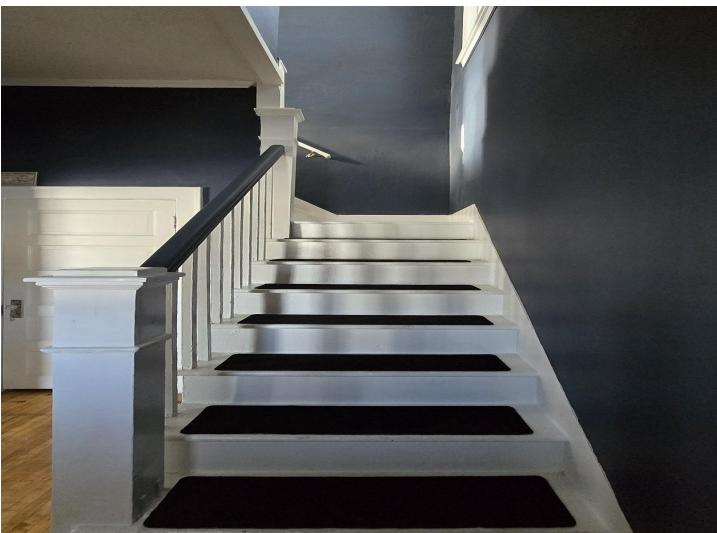


website: [www.AffinityRealEstate.com](http://www.AffinityRealEstate.com) | email: [info@affinityrealestate.com](mailto:info@affinityrealestate.com) | office: 218-237-3333 | fax: 218-237-3377

**Affinity**  
REAL ESTATE INC

**\$189,900**  
MLS 6639948 Residential  
1023 Minnesota Avenue  
Bemidji MN 56601



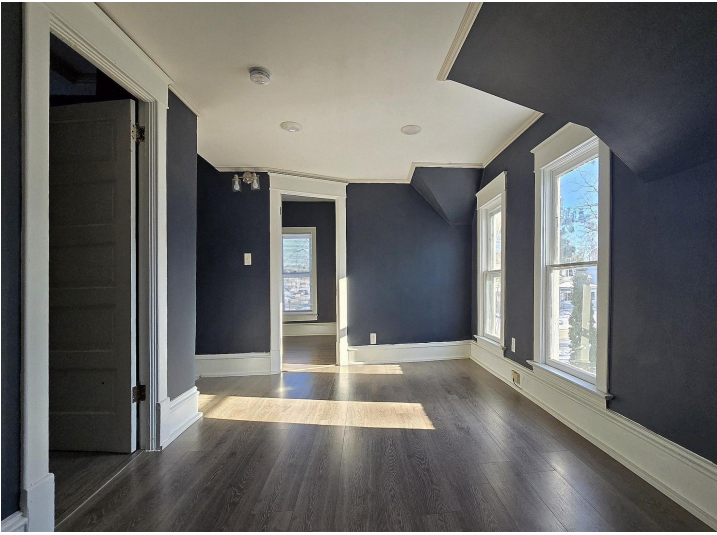


website: [www.AffinityRealEstate.com](http://www.AffinityRealEstate.com) | email: [info@affinityrealestate.com](mailto:info@affinityrealestate.com) | office: 218-237-3333 | fax:218-237-3377



**\$189,900**  
MLS 6639948 Residential  
1023 Minnesota Avenue  
Bemidji MN 56601



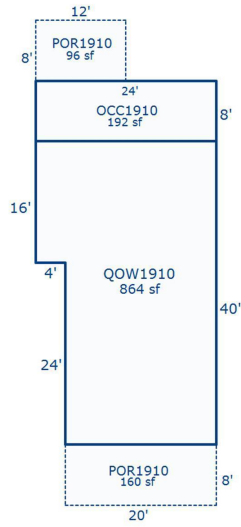


website: [www.AffinityRealEstate.com](http://www.AffinityRealEstate.com) | email: [info@affinityrealestate.com](mailto:info@affinityrealestate.com) | office: 218-237-3333 | fax:218-237-3377



**\$189,900**  
MLS 6639948 Residential  
1023 Minnesota Avenue  
Bemidji MN 56601





Sketch by Apex Sketch

website: [www.AffinityRealEstate.com](http://www.AffinityRealEstate.com) | email: [info@affinityrealestate.com](mailto:info@affinityrealestate.com) | office: 218-237-3333 | fax: 218-237-3377

**Affinity**  
REAL ESTATE INC

**\$189,900**  
MLS 6639948 Residential  
1023 Minnesota Avenue  
Bemidji MN 56601